



GMT MONTHLY MEMBERSHIP PROGRESS REPORT

Results as of: 6/30/2017

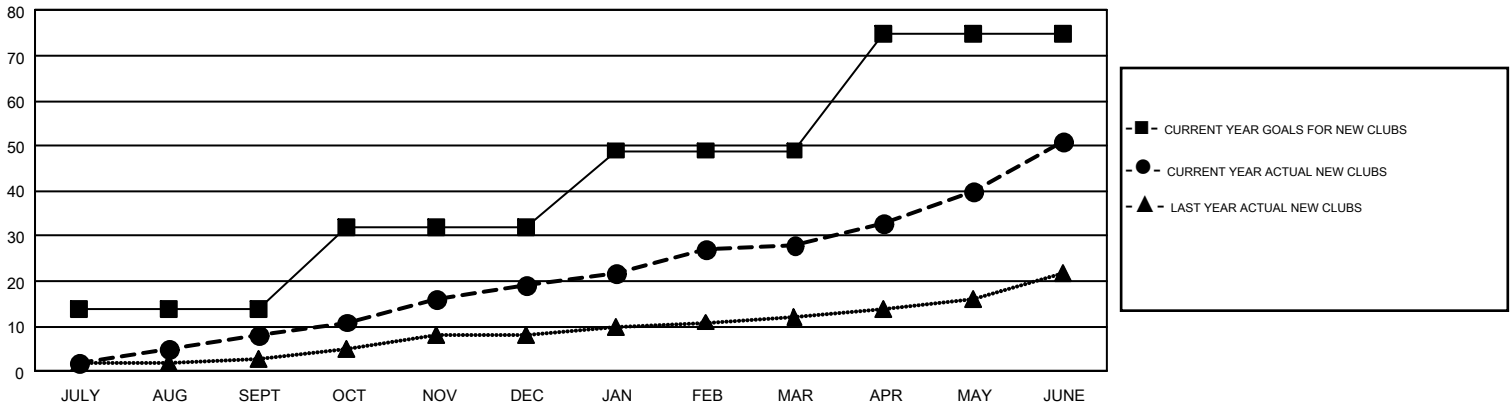
GMT Constitutional Area 1, Group H

GMT: OPEN

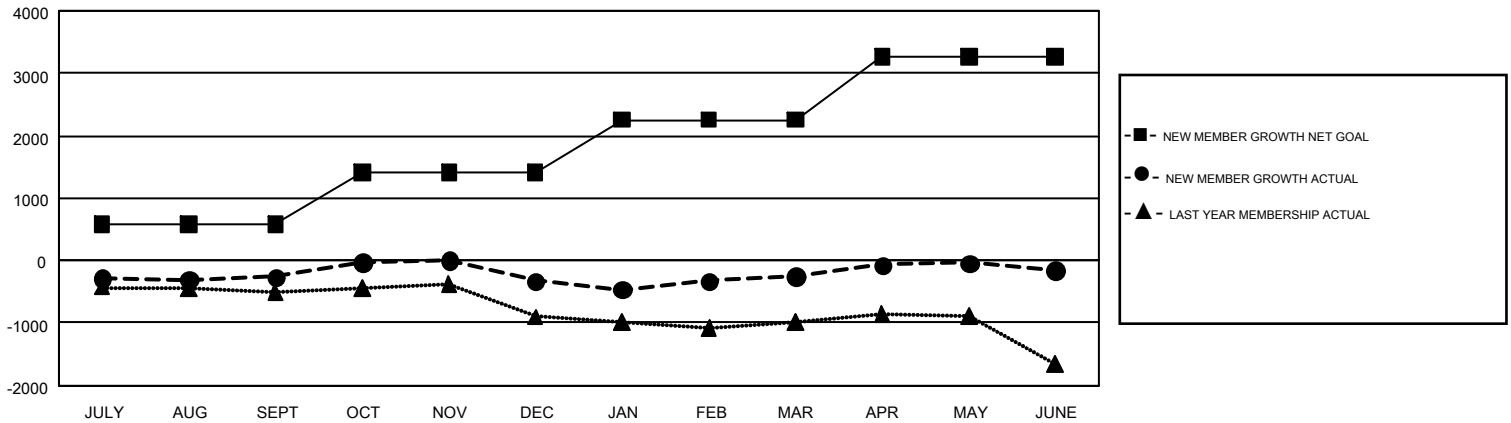
REPORT DOES NOT INCLUDE CLUBS IN UNDISTRICTED AREAS.

Clubs				Members			
RESULTS FOR 2016-2017				RESULTS FOR 2016-2017			
QUARTER	NEW CLUB GOAL	NEW CLUBS	DROPPED CLUBS	QUARTER	NEW MEMBER GROWTH NET GOAL (not reinstated or transfers)	NEW MEMBER GROWTH ACTUAL (not reinstated or transfers)	DROPPED MEMBERS ACTUAL (including transfers)
JULY/AUG/SEPT	14	8	7	JULY/AUG/SEPT	582	1,573	1,835
OCT/NOV/DEC	18	11	14	OCT/NOV/DEC	830	1,291	1,358
JAN/FEB/MAR	17	9	2	JAN/FEB/MAR	845	1,269	1,185
APR/MAY/JUNE	26	23	18	APR/MAY/JUNE	1,011	2,130	2,036

GOALS AND ACTUAL NEW CLUBS CUMULATIVE



GOALS AND ACTUAL MEMBERS CUMULATIVE



DROPPED CLUBS: 41	1,040 CLUBS OF 1,459 ADDED 1 OR MORE NEW MEMBERS	GENDER DISTRIBUTION MALE 24,624 (62.69%) FEMALE 14,652 (37.31%)
DROPPED MEMBERS DECEASED 573 CLUB CANCELLED 293 OTHER 5,546 TOTAL 6,412	CLICK HERE FOR CUMULATIVE MEMBERSHIP DATA	TOTAL FAMILY UNIT MEMBERS 7,951 FAMILY MEMBERS PAYING HALF DUES 4,126